



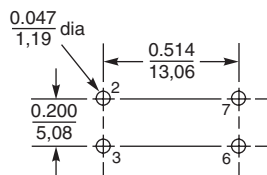
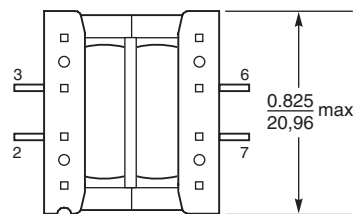
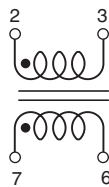
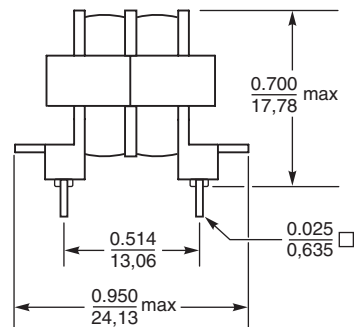
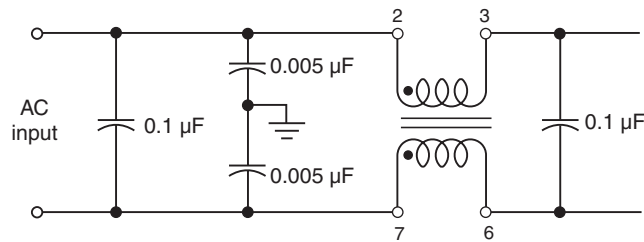
# Common Mode Choke - G6252-AL

- Low cost, high performance choke coil
- Designed to reduce AC line conducted common mode noise produced by switching power supplies.
- UL1446 Class B (130°C) Insulation System (UL File E83628)

Part number	Common mode impedance max (kOhms)	Inductance <sup>1</sup> min (mH)	Current rating <sup>2</sup> (mA)	DCR max <sup>3</sup> (Ohms)	Isolation <sup>4</sup> (Vrms)
G6252-AL	700.8 @ 0.21 MHz	10.5	300	2.1	2500

1. Inductance is per winding; measured at 1.0 Vrms, 15.75 kHz.
2. Based on 300 circular mils/Amp. Temperature rise is less than 10°C.
3. DCR is maximum per winding.
4. Isolation (hipot) measured for one minute)
5. Operating temperature range -40°C to +85°C.
6. Electrical specifications at 25°C.

## Typical Application

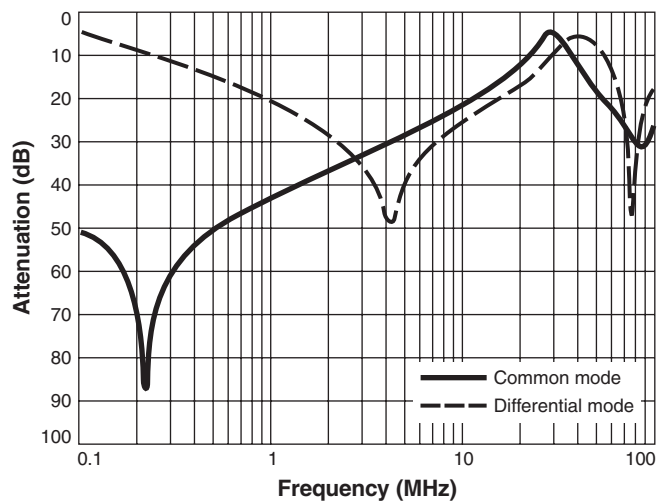


Recommended Board Layout

Bottom View

Weight 9.5 g  
Packaging 49 per tray

## Typical Attenuation (Ref: 50 Ohms)



## Typical Impedance vs Frequency

